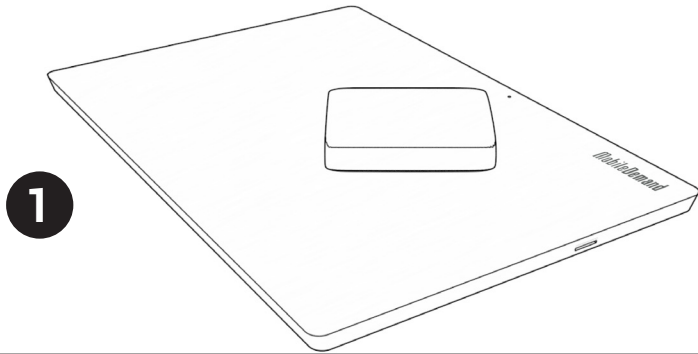


Screen Protector Installation Instructions

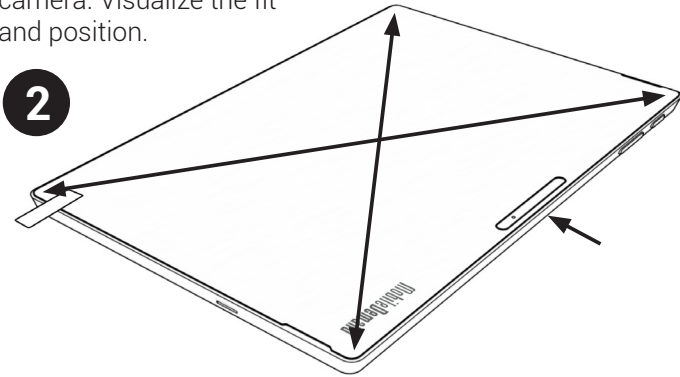
Follow these step-by-step instructions to guide you through the installation process.

Important: To help ensure successful installation, our professional installers highly recommend the use of a can of compressed air for removal of dust and debris. (Can of air not included).

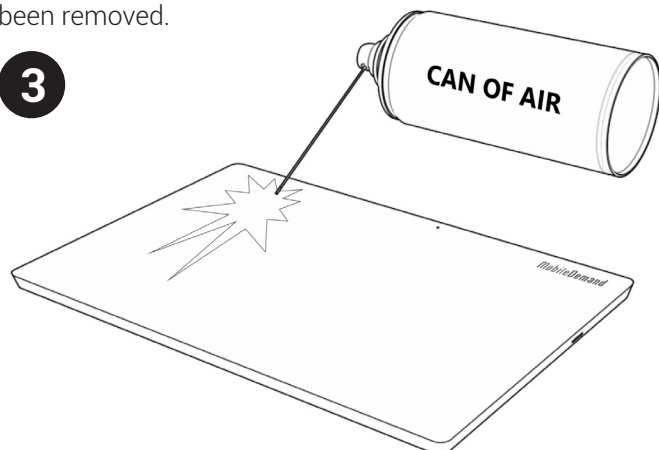
CLEANING - With a dust-free cloth wipe down the screen to remove any dust particles, smudges, fingerprints etc.



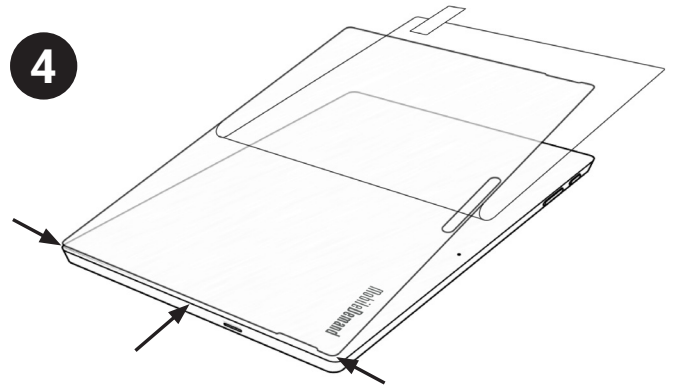
DRY RUN - You will want to get a sense of fit and position before actual installation. With protective backing still in place, orient and align slot in screen protector with the front camera. Visualize the fit and position.



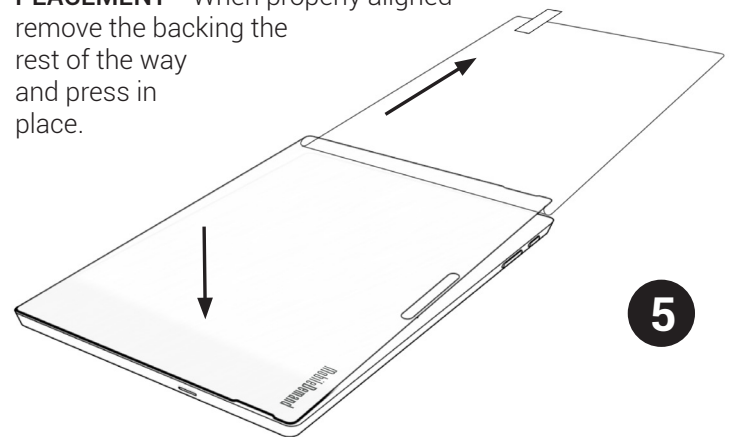
FINAL PREPARATION - Creating a dust free environment is critical. We **highly recommend** the use of compressed air for this step. Begin by wiping the screen down once more with lint free cloth then follow with compressed air. Thoroughly blow the screen to ensure all debris and dust particles have been removed.



ALIGNMENT - Moving quickly, remove protective backing about halfway and align screen protector along edge and center from side to side.



PLACEMENT - When properly aligned remove the backing the rest of the way and press in place.



BUBBLES - Bubbles are common. To remove, use your fingers and gently push to the edge of the screen.

